

Tips for using AI tools

The **use of AI tools is allowed** in the **b@s videochallenge**. But you must use them fairly and with consideration for others. If you keep the following in mind, nothing can go wrong.

Get familiar with AI

Familiarize yourself with the optimal use of AI tools. The more you know about AI, the better you will be able to use it. In particular, learn how to **get the best results with the right prompts**.

Further links

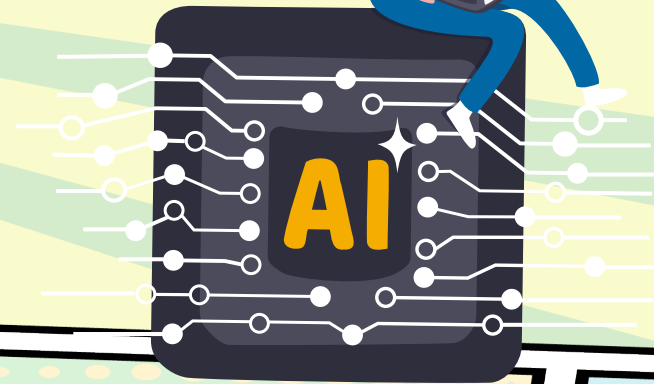
- 1
- 2
- 3

If you produce something with AI, name it as a source

Often, it's hard to tell if someone created something themselves or with the help of AI tools. That's why it's important to disclose that a **picture, text, or video was created with AI**.

How to cite AI tools as a source:

"Generated using the AI tool <X> <URL> with the following prompts from <Firstname Lastname> on <Date>:"
1. [...],
2. [...]."



If you're not sure

Ask your peers or teachers if you are unsure about anything. Your questions are helpful for others, too. If something isn't clear for you, someone else is sure to have the same question.

Protect your personal information

AI tools will also use any information you enter (e.g., your name or picture) for other purposes. Therefore, **do not enter any personal information about yourself or others**.



Don't use others' material

Never use others' images, text, or video as a basis for your work without asking for their permission. **Otherwise, you could infringe upon their rights.**

Critically analyze results

Sometimes the results of AI tools are inaccurate, even though they may look plausible at first glance. So don't trust them blindly, and analyze results critically. **That way you can find and correct any errors.**

